

FISHING PORT OF DUNMORE EAST

GENERAL INFORMATION

DATE OF VISIT: 11/092024

PORT MANAGEMENT

Port Authority : Dunmore East Harbour

Management: Department of Agriculture, Food and the Marine (DAFM)

PORT DESCRIPTION

A busy fishing harbour, home to a sailing club food shop/ smoke house, seafood shop, adventure facility, sailing club, coast guard, tour operators, boat yard, RNLI Lifeboat, net mending facility and a BIM ice plant.

Fishing practice: 12 regular boats under 24m, Mostly bottom trawls, 1 x beamer trawl, 2 x pure seines

Landings: White fish - Hake, Haddock, Whiting

MANAGEMENT OF USED FISHING GEAR

MANAGEMENT

Delivery: Notification procedures: Fishing vessels message the HM(Habour Master) prior to arrival. The Waste disposal area is clearly marked with signage in place. Access is gained via Harbour Staff. General Waste and recycling waste is deposited by port users directly into wheelie bins located on-site. Discarded nets are given separately to the harbour staff as they damage bin lorries. Ship-Generated Waste: The harbour management arranges collections of ropes, netting, fish boxes and other ship-generated waste in a 14CY skip by Starrus Eco Holdings T/A Greenstar. There is a forklift & teleporter for use on the harbour.

Recording fishing related waste delivered by ships: A waste management spreadsheet containing details of types/quantities of waste is updated, maintained and saved in the SFAD folder. Receipts are electronic and kept for a minimum of 3 years for all waste as per S.I No.117, 2003

Pre-treatment : non- available.

Type of Waste collected that has a recovery system: General recycling, paper, cardboard, plastics, glass., Waste Oil, Metal and Rubber is reused.

Fishing gear: Nets and rope end up in the general waste stream as there is currently no recovery system for them. There is an enclosed PRF. There is a dedicated area (not enclosed) for storing nets not in use, some of these nets are potentially at their EOL. Harbour Master's budget from DAFM, funded by the rates and charges order 2012 paid by fishermen.

BEST PRACTICES

Recording waste: A waste management spreadsheet containing details of types and quantities of waste maintained by the Harbour Master and saved in the SFAD shared folder.

Characterisation studies of PFW has been carried out by BIM to monitor common waste types.

Communications: Harbour Master > Fishermen - WhatsApp update on waste management/ Face to Face/ Notice board

OBJECTIVES

The harbour management would like more space to segregate fishing gear and to store items when segregated. To find a positive value chain for waste fishing gear

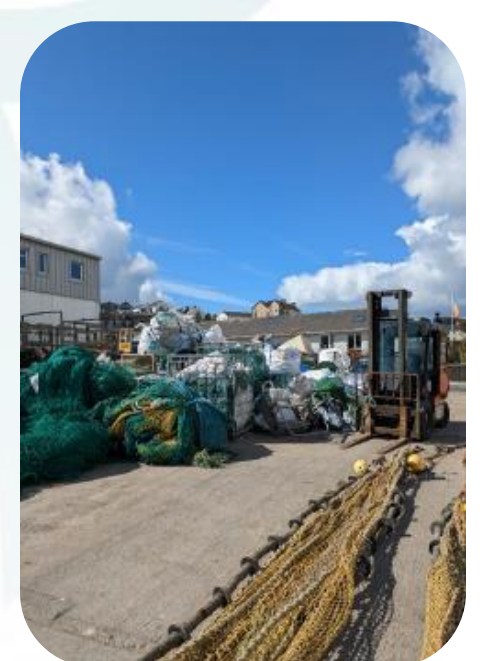
PASSIVE FISHING FOR LITTER

CURRENT PRACTICES

- When landed ashore waste goes into designated FfL tonne bags on the port. Then it is recorded by weight and this information goes to BIM.
- Some characterisation surveys have been carried out by BIM in the past.
- Waste is then emptied into a designated FfL skip which goes to general waste once full.
- In 2023 - 12.9 tonne of PFW was collected

CONSTRAINTS

- Space for dismantling gear and storage is limited.
- Lack of resources to segregate gear and characterise
- There are currently no options for waste fishing gear apart from the general waste stream.
- Harbour staff did not believe there is time on board to sort waste, due to heavy workload.



Interreg
Atlantic Area



Co-funded by
the European Union

free
litterAT